

HIGH EFFICIENCY BOILERS

Casco Bay

CBX Series

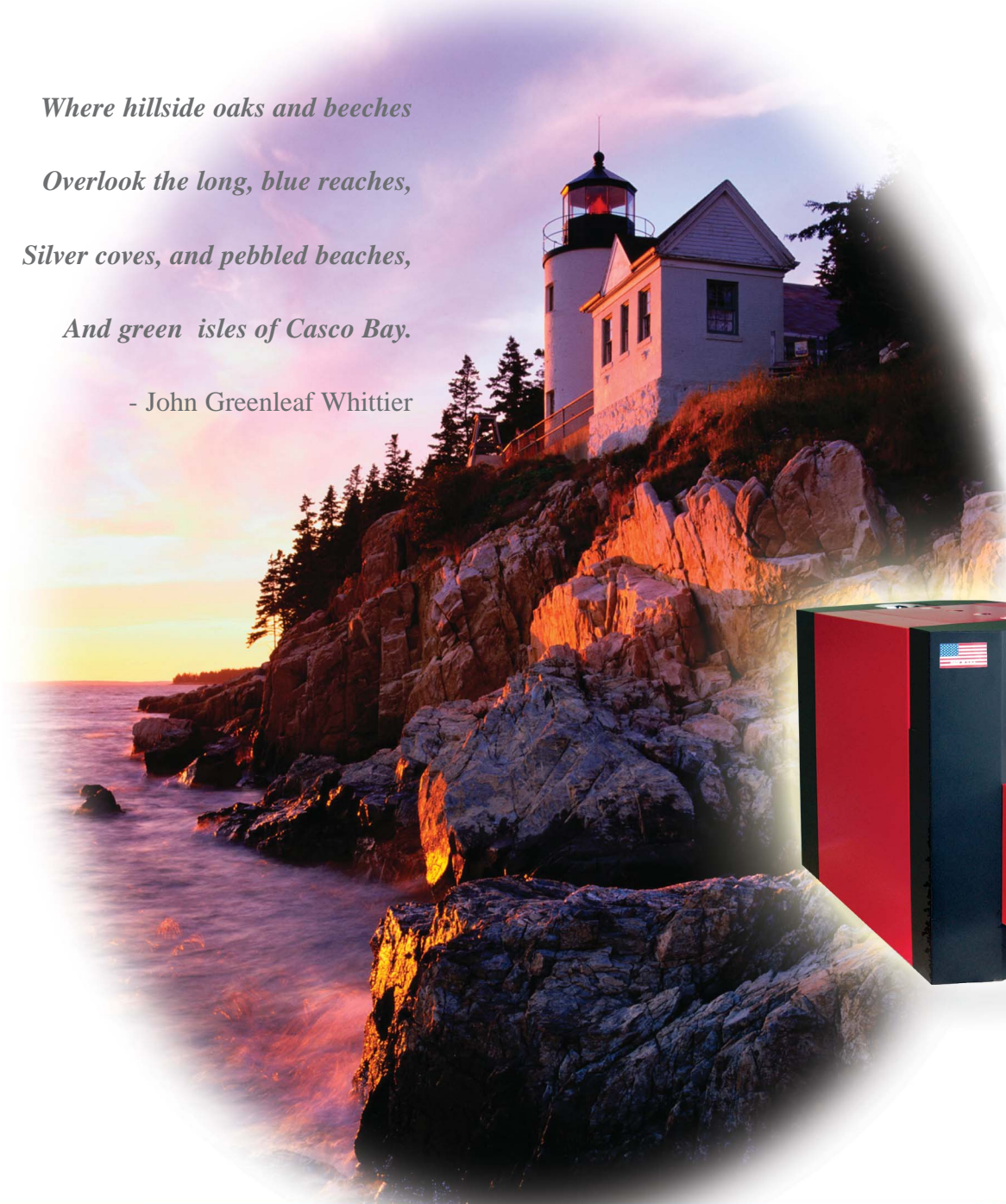
Where hillside oaks and beeches

Overlook the long, blue reaches,

Silver coves, and pebbled beaches,

And green isles of Casco Bay.

- John Greenleaf Whittier



Welcome home

COLUMBIA



Welcome to *Casco Bay . . .*

Over 300 years ago, John Adams and Jonathan Seward met at historic Casco Bay, where long, cold Maine winters tested the human spirit.

Those days are long gone, but the cold, dark winters remain ... with one exception: the new Casco Bay Boiler CBX Series.

Columbia Boiler is proud to introduce our new Casco Bay Boiler

You know it's different the minute you look at it. The designer look with its striking, contemporary lines reflects its advance technology and superior performance.

High efficiencies up to 87% AFUE,

the CBX Series is a smart step in the battle against rising fuel prices and the need for preserving the world's natural resources.

Casco Bay's operating efficiencies make it one of the most cost effective ways to heat your home and your domestic hot water. It is Energy Star rated.

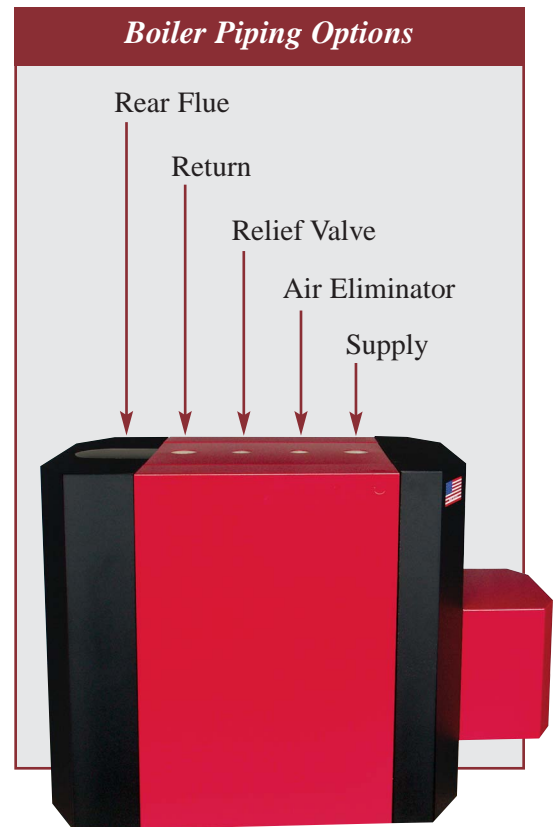
Versatility: direct vent, domestic hot water, efficient performance

The new Casco Bay delivers on all three, and, with our specially-designed hot water coil, you will enjoy an abundant and equally efficient supply of domestic hot water.

It's a heating system that even John Adams would approve of.

Our commitment to you ...

Our commitment does not end with the installation of your boiler. We are committed to outstanding performance, ease of service, and parts availability. We are there for you after the sale. We have been around since 1936, and we will be around tomorrow.



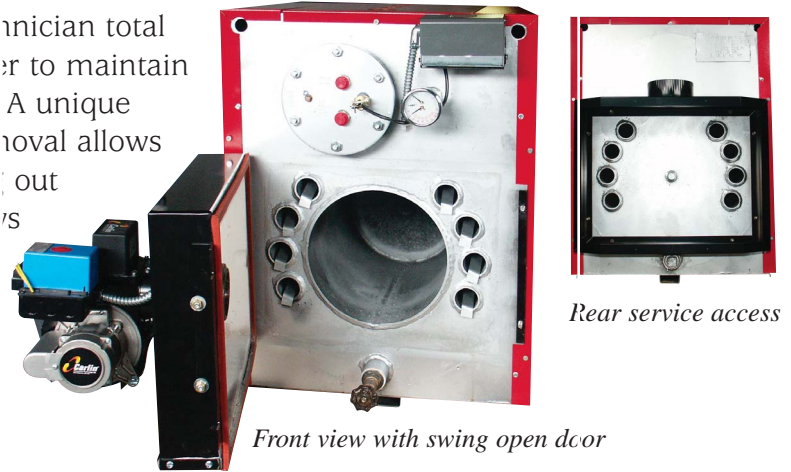
Direct Vent Versatility

The Casco Bay boiler is available as a direct vent boiler for new homes without chimneys, older homes with chimneys that are in disrepair, and for electric to oil conversions.

The Casco Bay boiler is manufactured using a three-pass design. For over 70 years, **Columbia Boiler** has been known for this proven design in its commercial style boilers. Now this technology comes in a boiler sized just right for your home.

Serviceability

The CBX Series gives your service technician total access to the inside of the boiler in order to maintain maximum efficiency for years to come. A unique front jacket panel designed for easy removal allows convenient access to a one piece, swing out door. The swing open burner door allows thorough cleaning of every inch of heating surface on your boiler. A detachable panel allows the technician to access the back of the boiler without removing the flue pipe.



Front view with swing open door

Rear service access

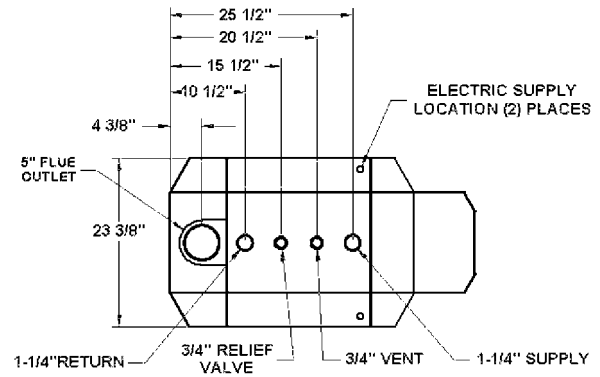
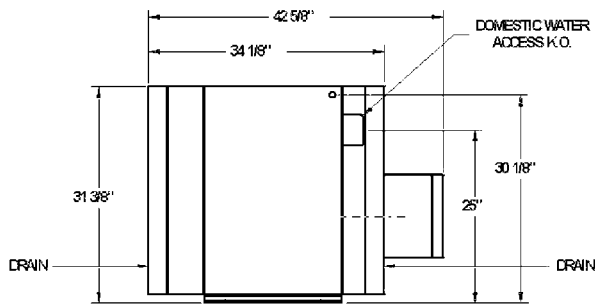
Welcome to performance, efficiency, and versatility



*Cabinet conceals wiring,
controls, and burner*

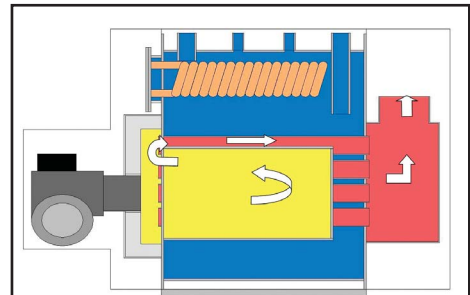
- Direct vent option
- 5 GPM domestic coil
- Three pass positive pressure design
- A reversible full swing open door
- Standard Honeywell R7224 electronic control includes a digital display
- Striking two-tone cabinetry conceals wiring and controls
- High efficiency to 87%
- Easy cleaning from either front or rear of boiler
- Limited Lifetime Warranty on heat exchanger
- No combustion chamber
- Energy Star Rated

Casco Bay SPECIFICATIONS

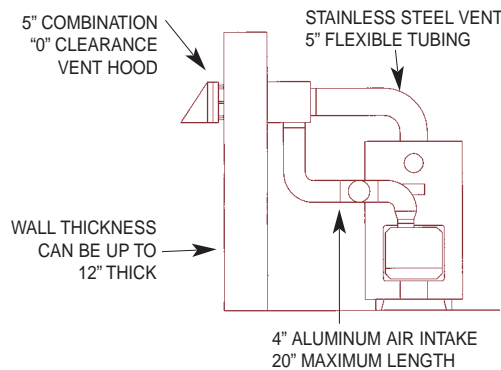


IBR RATINGS AND DATA

Boiler Model No.	CBX 90WC	CBX 100WC	CBX 110WC	CBX 125WC
Firing Rate GPH	0.90	1.00	1.10	1.25
Input BTU/HR	126,000	140,000	154,000	175,000
DOE Capacity BTU/Hr	110,000	121,000	132,000	148,000
Net Output BTU/HR	95,000	105,000	115,000	129,000
DOE Efficiency	87.0%	86.5%	86.0%	85.5%
Nozzle @ 150 PSI Carlin	0.75 x 60°B	0.85 x 60°B	1.00 x 60°B	1.10 x 60°B
Boiler Tubes	8	8	8	8
Baffles	8	8	8	8
Water Content - Gallons	28	28	28	28
Supply	1-1/4"	1-1/4"	1-1/4"	1-1/4"
Return	1-1/4"	1-1/4"	1-1/4"	1-1/4"
Coil Capacity	5 GPM	5 GPM	5 GPM	5 GPM
Shipping Weight Lbs.	460	460	460	460



The CBX achieves its high efficiencies by re-circulating the flue gases through your boiler three times. Most other residential boilers are designed for only one or two passes through the boiler. With our three pass design, the flue gases don't go right up your chimney, but remain in the boiler longer for more efficient operation.



Manufactured in USA by
COLUMBIA BOILER COMPANY
 P.O. Box 1070, Pottstown, PA 19464
 PHONE 610.473.8457 FAX 610.367.6800
www.columbiaboiler.com



Constructed and hydrostatically tested in accordance with ASME Boiler Code, Section IV.