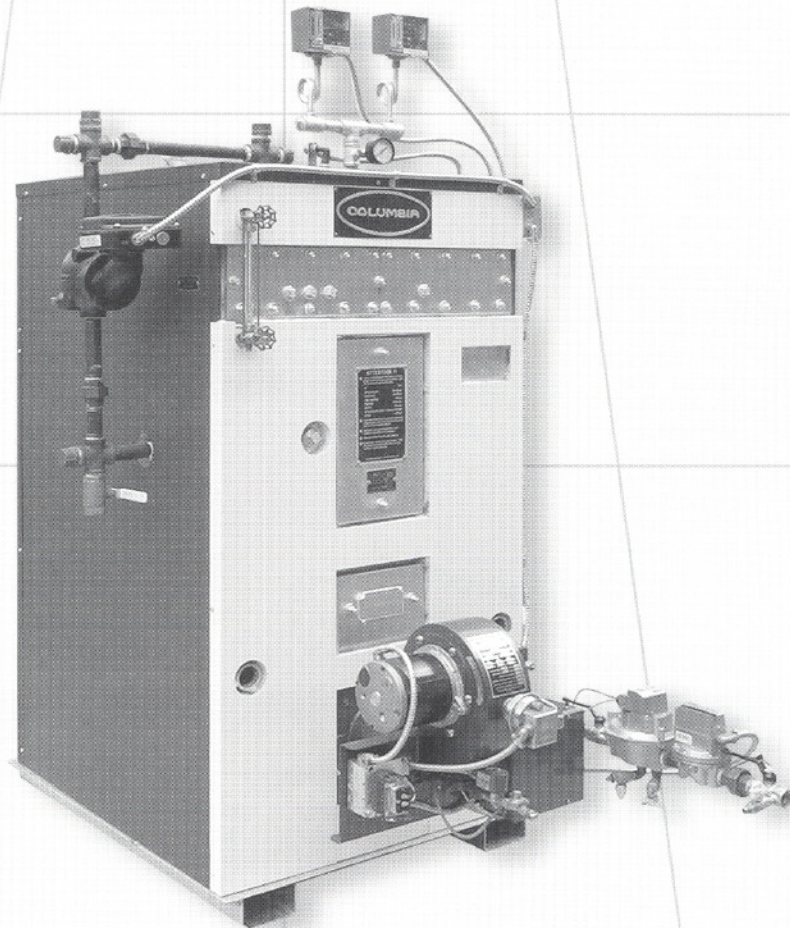


# COLUMBIA

## GL-L SERIES



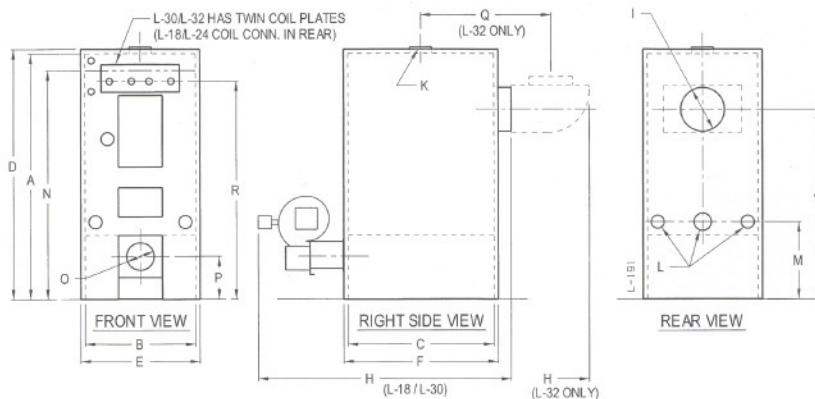
*The GL Series offers fast and efficient hot water heating and processing, and low pressure steam heating and processing.*

*The GL is ideal for bakeries, micro breweries, health spas, canneries, restaurants, plus humidification, and many other small low pressure steam applications.*

*You can do BETTER with Columbia*  
**GOOD people. BETTER Boilers. BEST value.**

# SPECIFICATIONS AND DATA

**INDIRECT  
HOT WATER  
COILS  
OPTIONAL**



**SERIES  
CAN BE  
ALTERED  
FOR  
PRESSURE  
FIRING**

BOILER DIMENSIONS						
MODEL NO.	GL-18 L-18	GL-20 L-20	GL-22 L-22	GL-24 L-24	GL-30 L-30	GL-32 L-32
A Height	44"	48"	52"	56"	56"	60"
B Width	19"	19"	25"	25"	30"	30"
C Length	22"	25"	26-1/2"	30-1/2"	31"	36"
JACKET DIMENSIONS						
D Height	45"	49"	53"	57"	57"	61"
E Width	21"	21"	27"	27"	32"	32"
F Length	25-1/2"	28-1/4"	30-1/2"	34-1/4"	34-3/4"	40-3/4"
H Length w/Burner (Oil)	36-1/4"	39"	44-1/2"	41-1/4"	45-1/2"	51-1/2"
Length w/Burner(Gas)	37-1/2"	40-1/4"	42-1/2"	46-1/4"	46-3/4"	55"
MISCELLANEOUS DIMENSIONS						
I Flue Outlet	8"	8"	9"	9"	10"	10"
J Flue Outlet to floor	32-1/4"	36-1/4"	39-1/2"	41-3/4"	42"	43"
Chimney Size	8" Sq. x 20'	8" Sq. x 20'	8" Sq. x 30'	10" Sq. x 30'	10" Sq. x 30'	12" Sq. x 30'
K Supply Outlet	3"	3"	3"	4"	4"	4"
L Return Inlet	(2) 1-1/2"	(2) 1-1/2"	(2) 1-1/2"	(2) 1-1/2"	(1) 3"	(1) 3"
M Return Inlet to Floor	15-1/2"	15-1/2"	17-1/2"	17-1/2"	18-3/4"	18-3/4"
N Water Line to Floor	40"	44"	48"	52"	51"	53"
Firebox Width	11"	12"	15"	15"	18"	18"
Firebox Length	14"	16"	16"	18"	19"	24"
O Burner Opening	5"	5"	5"	5"	5-1/2"	5-1/2"
P Burner Opening to Floor	8"	8"	9"	9"	10"	10"
Q c Supply Outlet to c Smoke Outlet	-	-	-	-	-	29-1/4"
Shipping Weight	650 lb.	770 lb.	1080 lb.	1260 lb.	1500 lb.	1890 lb.
R Coil Conn.C/L	38"	42"	46-1/2"	47-3/4"	49-1/2"	50-1/2"

\*\*Adjustable Flange Length

BOILER-BURNER UNIT						
MODEL NO.	GL-18 L-18	GL-20 L-20	GL-22 L-22	GL-24 L-24	GL-30 L-30	GL-32 L-32
Horsepower	4	6	8	9.5	13	16
Input-BTU per hour	196,000	280,000	326,000	399,000	560,000	700,000
L Series Input - Gals. per hour	1.40	2.00	2.40	2.85	4.00	5.00
Gross Output BTU per hour	157,000	224,000	269,000	320,000	448,000	560,000
Net Output BTU per hour - water	137,000	195,000	234,000	279,000	390,000	487,000
Net Output BTU per hour - steam	118,000	168,000	202,000	209,000	336,000	420,000
Net Output Sq. Ft. - Steam	492	700	842	871	1400	1750
Heating Surface - Sq. Ft.	24.2	32.5	41.5	53.6	65.0	90.0
Combustion Volume - Cu. Ft.	3.6	5.1	6.5	8.5	10.8	13.8
Water Capacity Water - Gallons	24	31	43	55	80	90
Water Capacity Steam - Gallons	18	23	32	43	60	68
Tankless Water Heater						
Gals. per hr. 100' rise (continuous)	170	240	300	330	360	390
Gals. per min. 100' rise	5***	5***	5	5	6	6-1/2
Coil Model No.	#2	#2	#3	#3	N-1	N-1
<b>Note:</b> Coil Connections 1", 150 PSI max. operating						

\*\*\*Intermittent Flow Rate -- All others are continuous flow rates



Manufactured in USA by  
**COLUMBIA BOILER COMPANY**

P.O. Box 1070, Pottstown, PA 19464  
(610) 323-2700 FAX (610) 323-7292

www.columbiaboiler.com cbcsales@ptd.net

Operating Pressures: Steam 15 P.S.I.  
Water 30 P.S.I.



CONSTRUCTED in accordance with S  
ASME Boiler & Pressure Vessel Code.

