

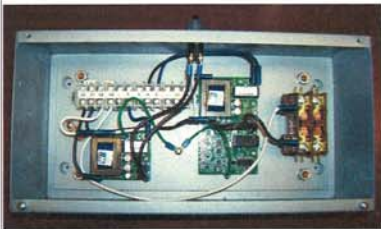
# Boiler Wise

## Columbia Boiler Company

### Fall / Winter 2013



Columbia Builds Boilers for Breweries and Distilleries



NEW MPH PANEL BOX FOR STEAM BOILERS

### Lead Times\*

- CT 6 - CT 50 Gas Boilers : In Stock
- CT 6 - CT 50 Oil Boilers : Stock - 2 weeks
- L, WL, and MPH Boilers : Call Factory
- HRT, Keystone Boilers : 10 -12 weeks
- Waste Oil Boilers : In Stock

\*Subject to prior sale. Standard burners.

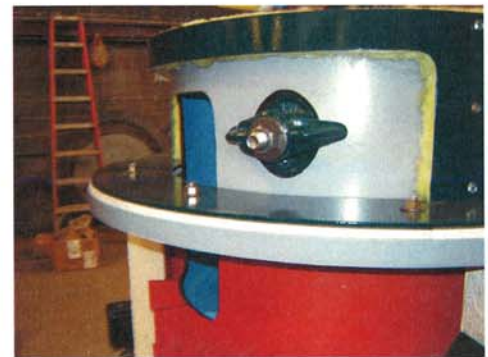


### What's New!

- ◆ Automatic surface blowdown is now an option on CT boilers. **Call for details.**
- ◆ The MPH 5, 10, & 15 are available for sale. **Contact us for new spec sheets.**
- ◆ We will begin stocking stainless steel feed tanks for sale in 2014.

### From the Inside by Todd Bainbridge / Inside Sales

We upgraded the design of the CT 10 through CT 50 models. Improvements include a new steel plate sealing method on the top ring, which is now impervious to flue gas leakage, and a wet leg pressure vessel design. The wet leg design added additional heating surface, allowing us in some cases, to reduce the height of the boiler.



### October 2013

### November 2013

### December 2013

PLEASE FAX  
YOUR REQUESTS  
FOR SALES  
LITERATURE  
TO 610-323-7292

Su	M	Tu	W	Th	Fri	Sa	Su	M	Tu	W	Th	Fri	Sa	Su	M	Tu	W	Th	Fr	Sa
		1	2	3	4	5						1	2	1	2	3	4	5	6	7
6	7	8	9	10	11	12	3	4	5	6	7	8	9	8	9	10	11	12	13	14
13	14	15	16	17	18	19	10	11	12	13	14	15	16	15	16	17	18	19	20	21
20	21	22	23	24	25	26	17	18	19	20	21	22	23	22	23	24	25	26	27	28
27	28	29	30	31			24	25	26	27	28	29	30	29	30	31	1	2	3	

CLOSED FOR HOLIDAY