

# COLUMBIA

## BLOWDOWN SEPARATORS



*Our blowdown separator is backed by Columbia's trusted reputation as an industry leader in high pressure steam equipment.*

*Since 1936*

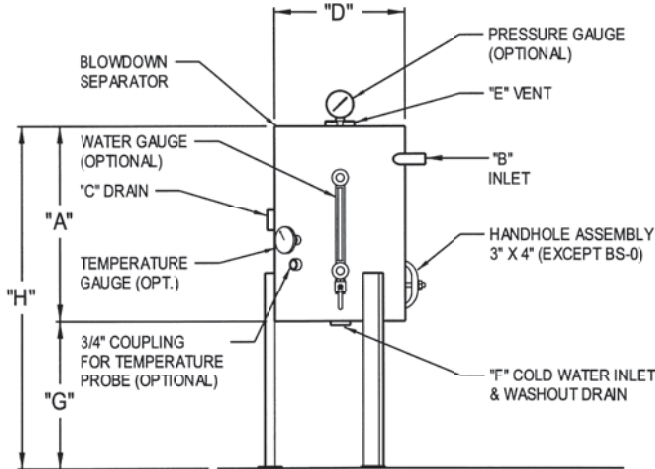


*You can do BETTER with Columbia*  
**GOOD** people. **BETTER** Boilers. **BEST** value.

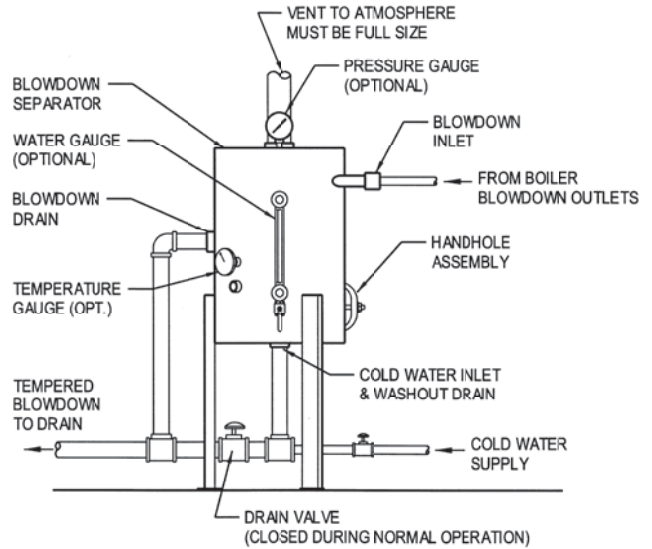


# SPECIFICATIONS AND DATA

## DIMENSIONS AND FEATURES



## SUGGESTED HOOK-UP TO BOILER



MODEL	HIGH PRESSURE BOILER HP (MAX)	LOW PRESSURE BOILER HP (MAX)	DIMENSIONS								SHIPPING WEIGHT
			A	B	C	D	E	F	G	H	
BS-0	15	N/A	18"	1"	2"	12"	2"	2"	14"	32"	125
BS-1	25	N/A	24"	1"	2"	16"	2-1/2"	2"	18"	42"	230
BS-2	60	15	30"	1-1/4"	2"	16"	3"	2"	18"	48"	260
BS-3	100	60	36"	1-1/2"	3"	16"	4"	2"	18"	54"	290
BS-4	150	100	42"	2"	3"	16"	4"	2"	18"	60"	320
BS-5	200	150	48"	2"	3"	16"	4"	2"	18"	66"	350

The BS-6, BS-7, BS-8 are available for use in Canada. Consult factory for CRN information, sizing, dimensions and pricing.

The Columbia separator design incorporates a water seal at the outlet which permits the operator to introduce cold water from the bottom to mix with the hot water and boiler steam blowdown in the separator. This reduces the outlet temperature to a level that makes it safe for discharge.

Maximum boiler working pressure: 250 psi  
Maximum blowdown separator pressure: 65 psi

Blowdown Separators are sized in accordance with National Board Standards.

### RECOMMENDED OPTIONAL EQUIPMENT

- 0-100 lb. Pressure Gauge
- 0-200° Temperature Gauge
- Water Level Gauge
- Automatic Cooling Bellows Type Valve



Manufactured in USA by  
**COLUMBIA BOILER COMPANY**  
P.O. Box 1070, Pottstown, PA 19464  
(610) 323-2700 FAX (610) 323-7292

www.columbiaboiler.com email: cbcsales@columbiaboiler.com



CONSTRUCTED in accordance with Section VIII, Div. 1, ASME Boiler & Pressure Vessel Code.

